

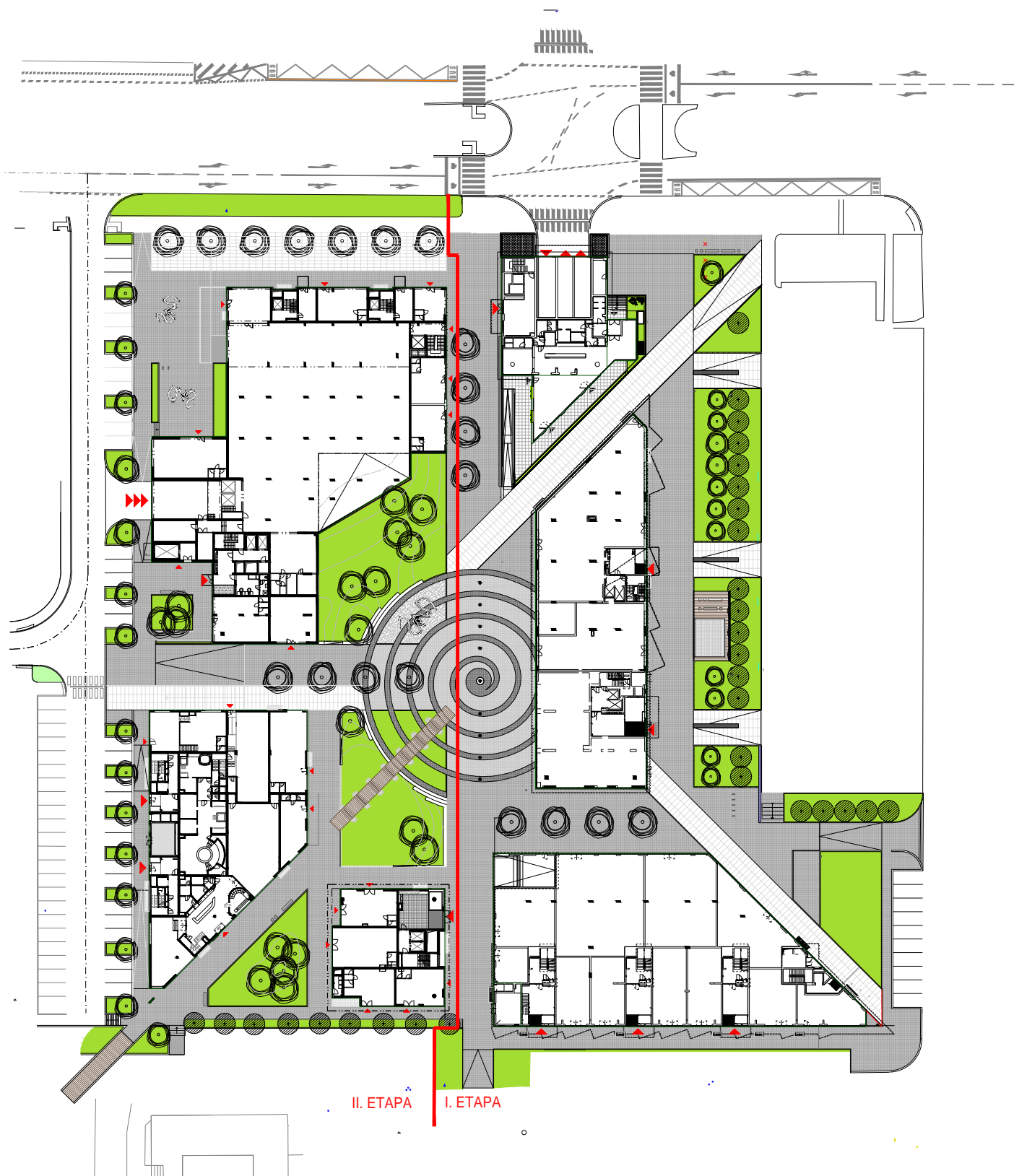
0m 10m 20m 50m

CASUJA



11 púdorys 1pp

Stavba roku 2016 | A4 | 1:1000 | ByTy Malešice



0m | 10m | 20m | 50m

CASUA



12 púdorys 1np

Stavba roku 2016 | A4 | 1:1000 | ByTy Malešice



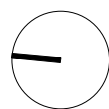
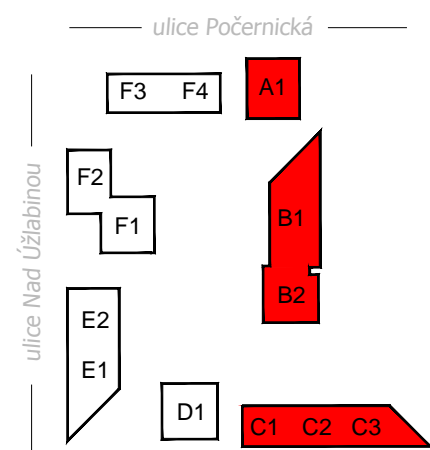
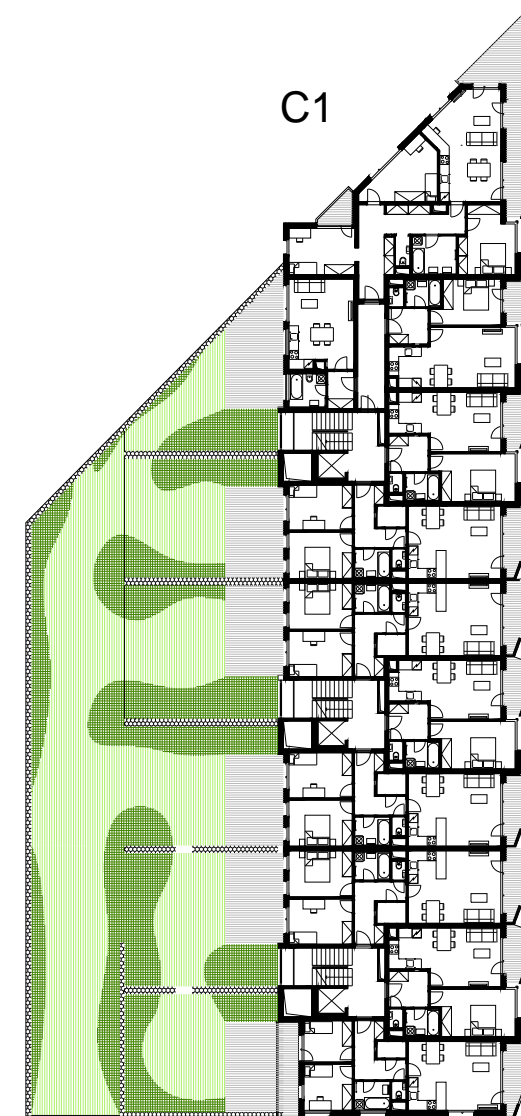
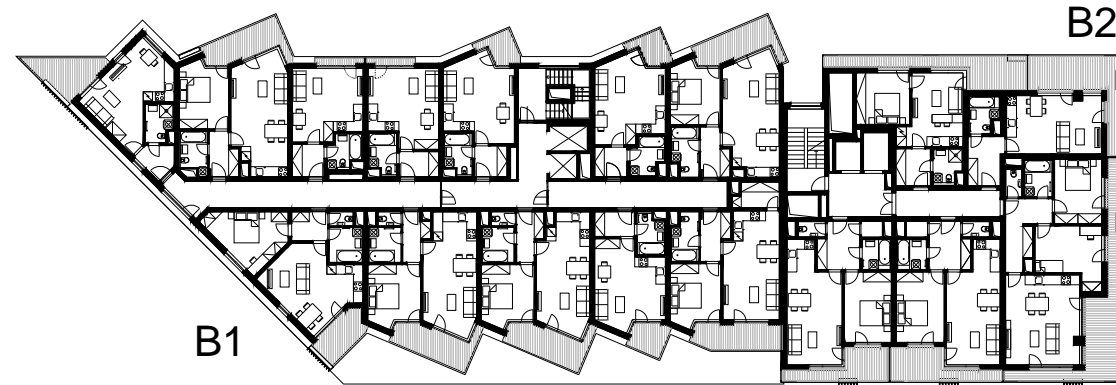
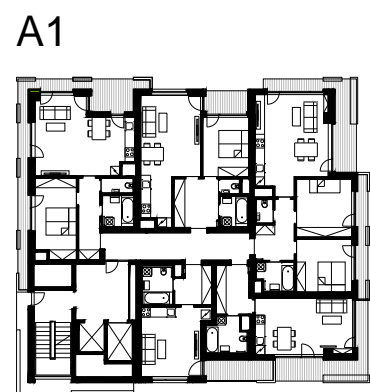
0m 10m 20m 50m

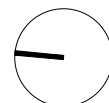
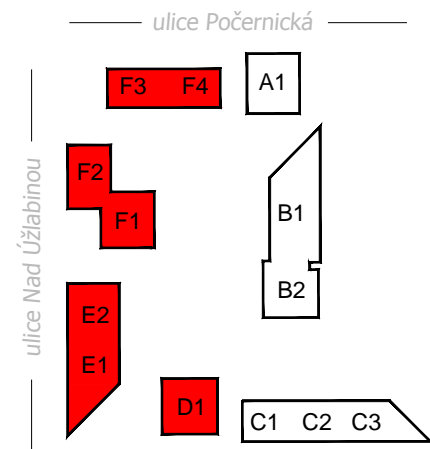
CASUJA

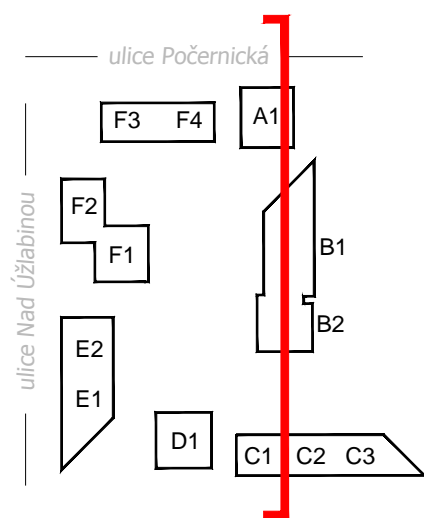
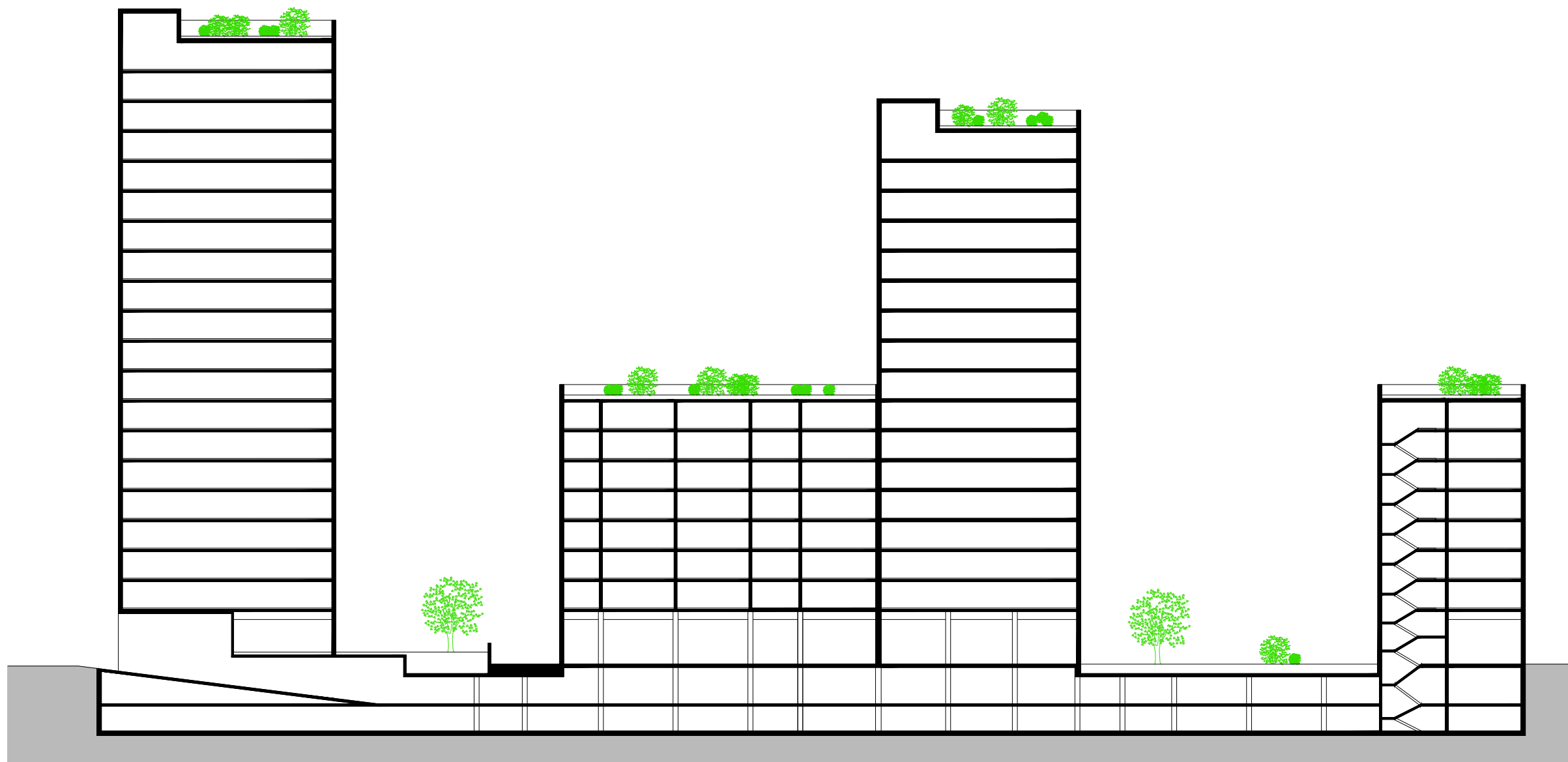


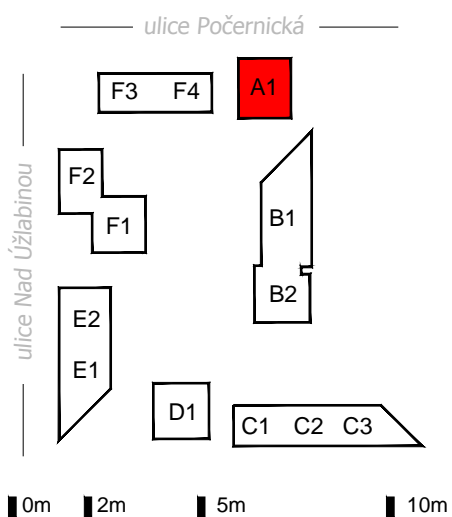
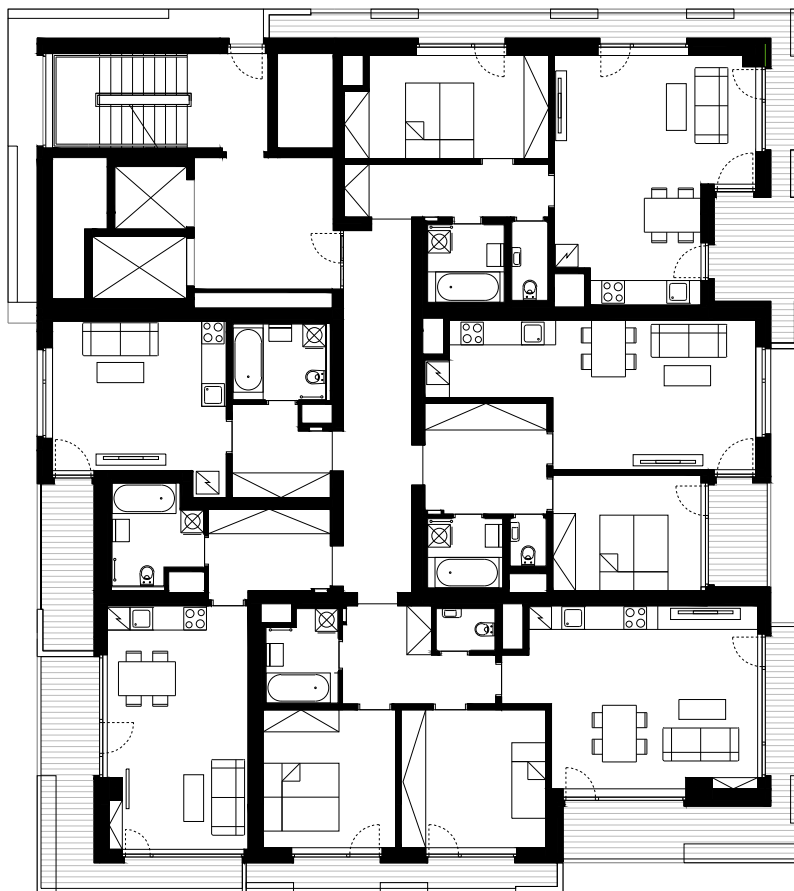
13 pŕdorys 2np

Stavba roku 2016 | A4 | 1:1000 | ByTy Malešice



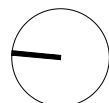
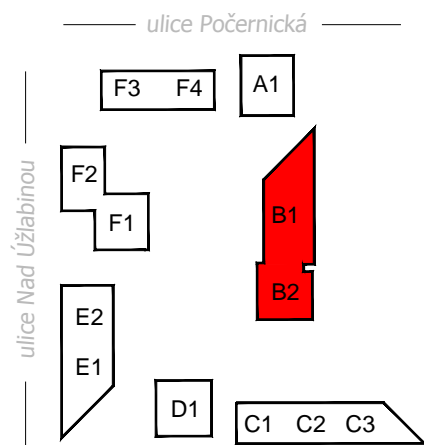
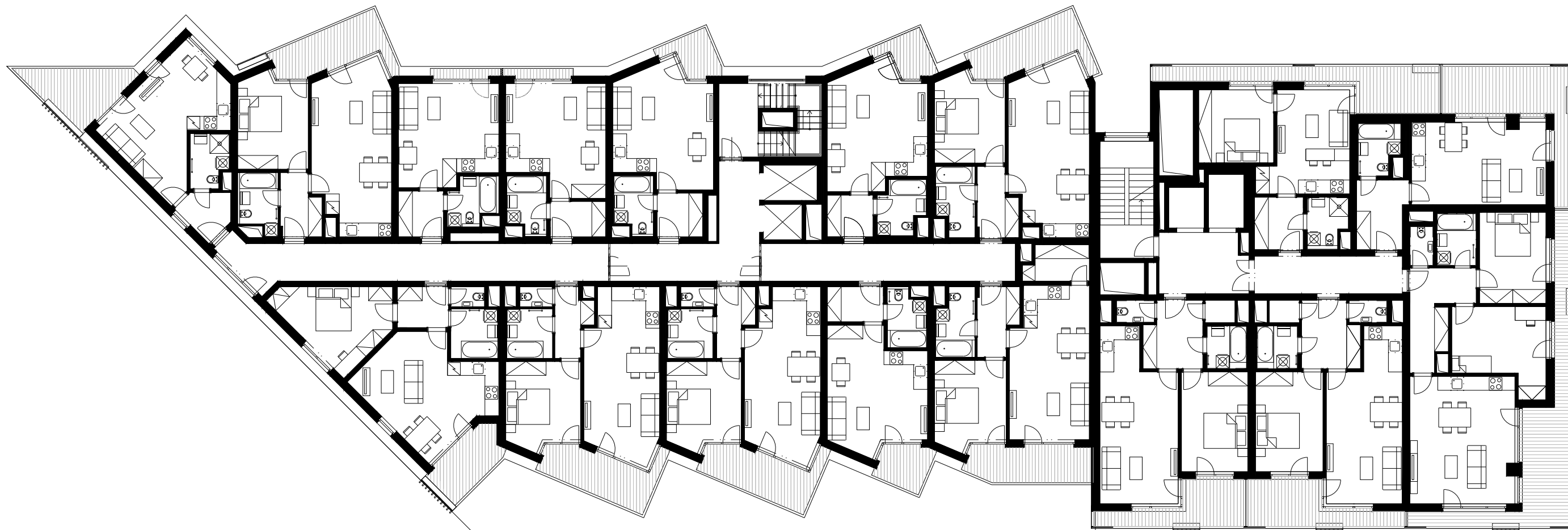


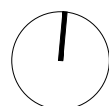
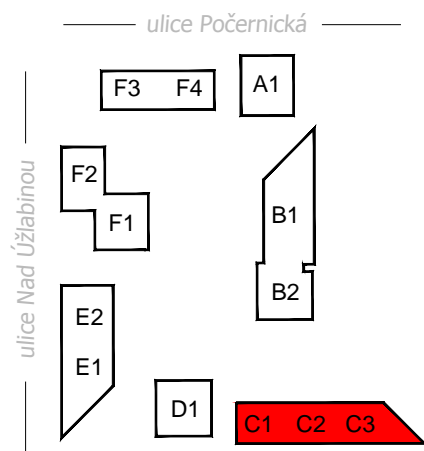
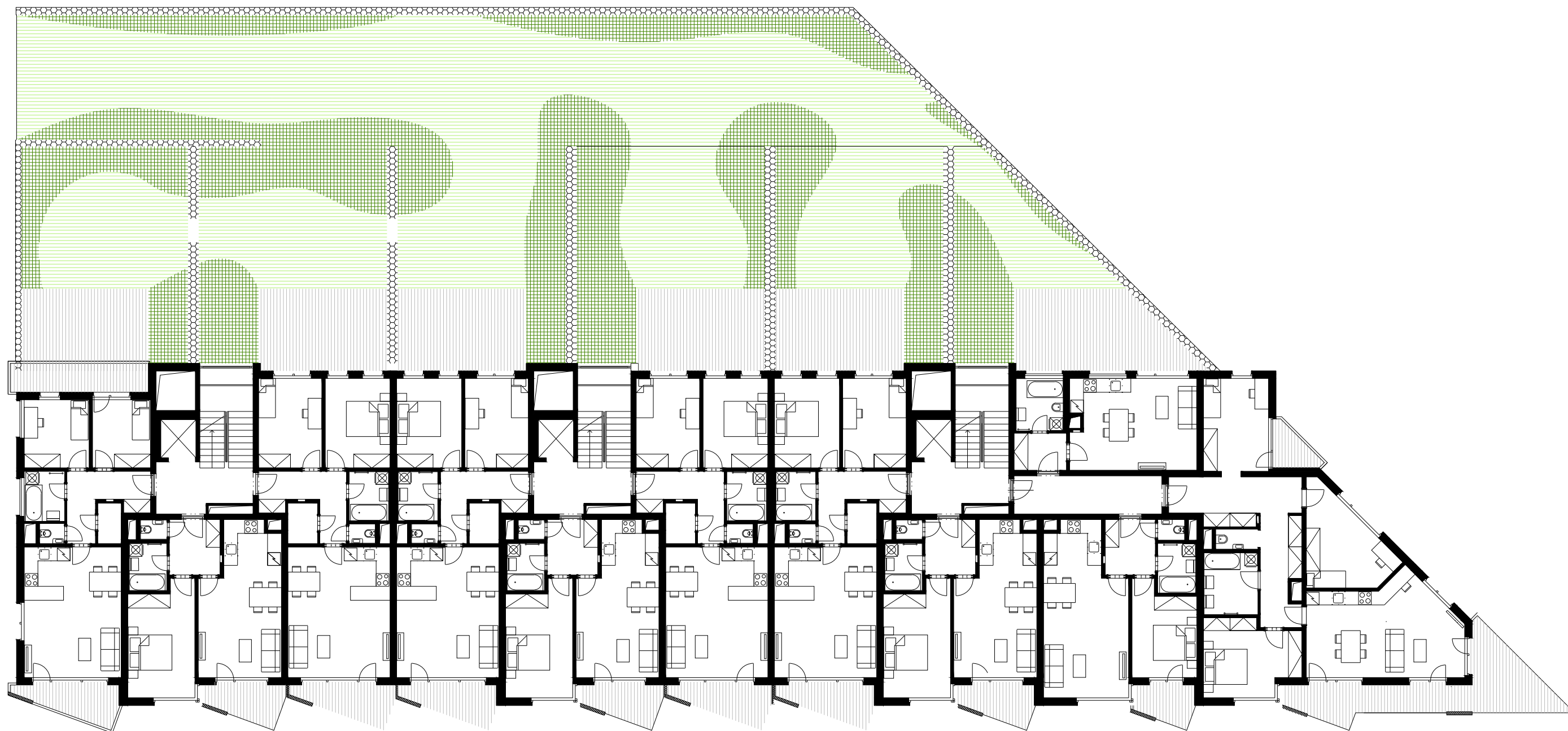


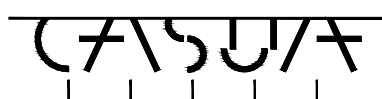
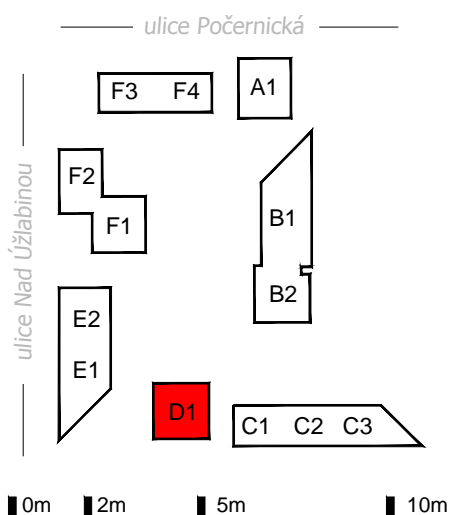
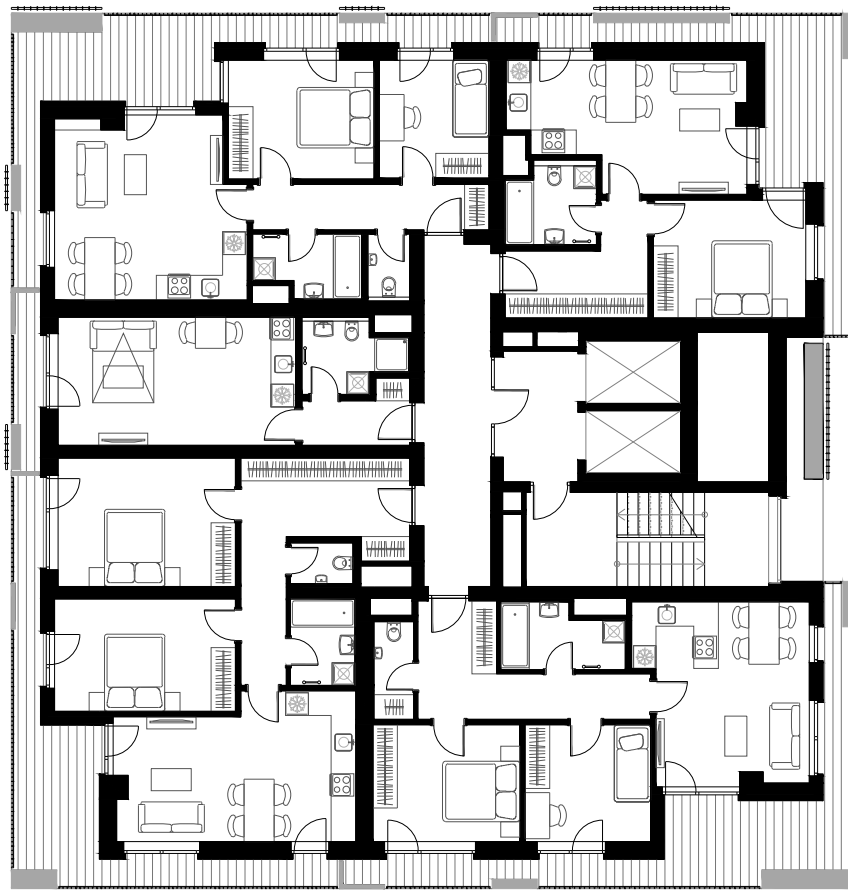


17 pŕdorys 2np - objekt A1

Stavba roku 2016 | A4 | 1:200 | ByTy Malešice

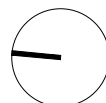
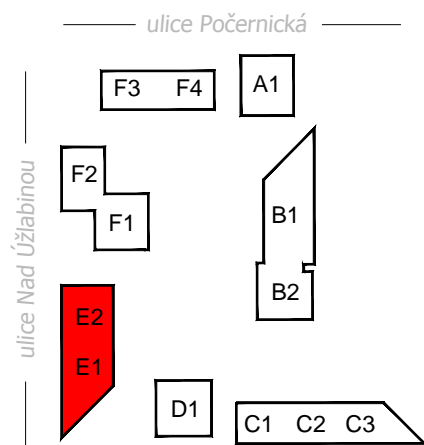
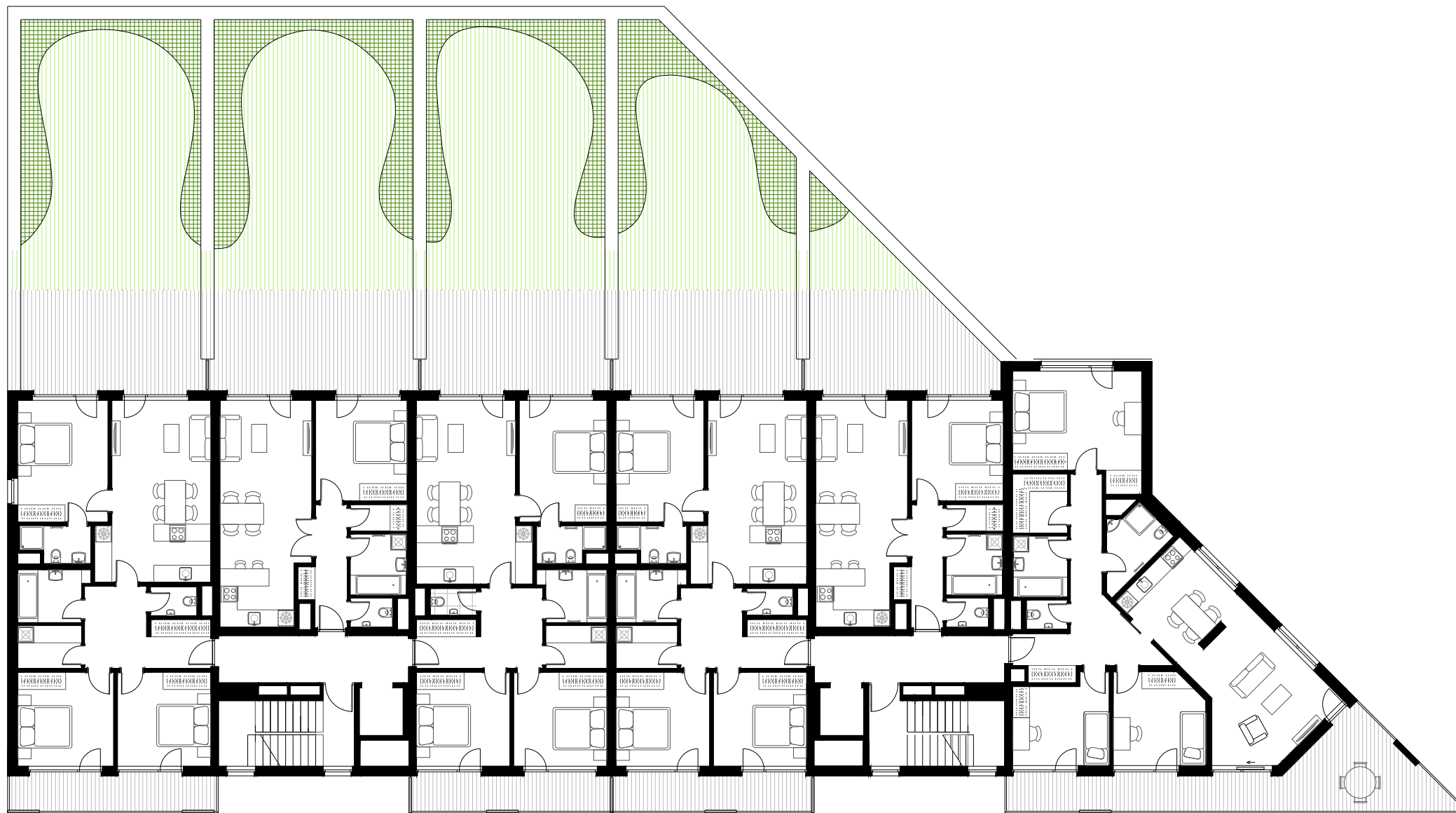


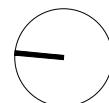
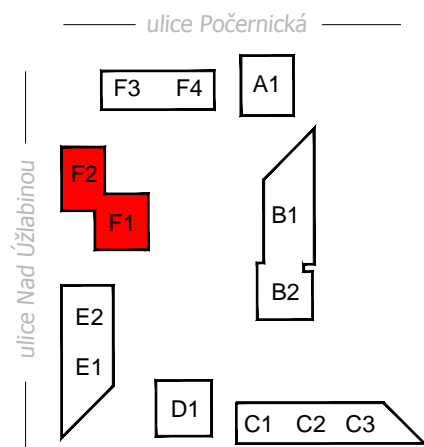


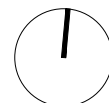
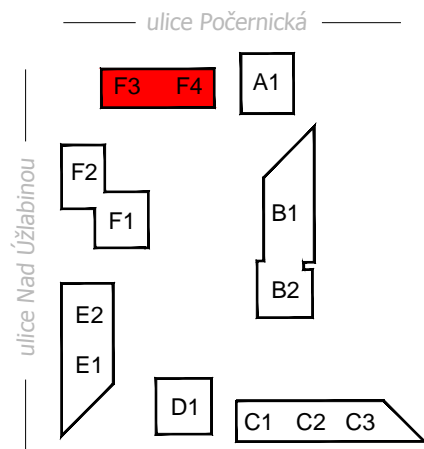


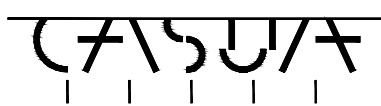
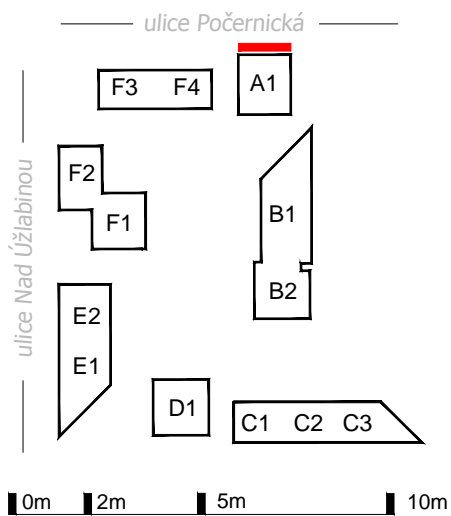
20 půdorys 2np - objekt D1

Stavba roku 2016 | A4 | 1:200 | ByTy Malešice



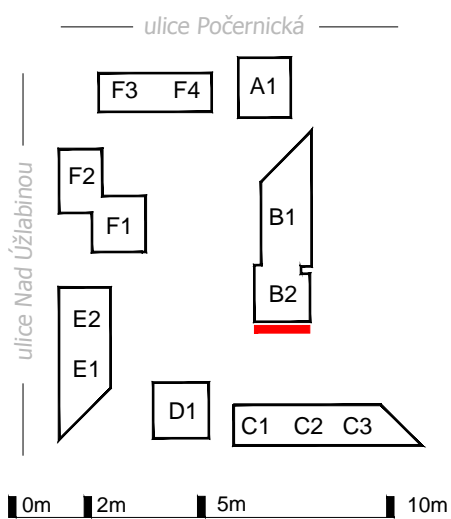






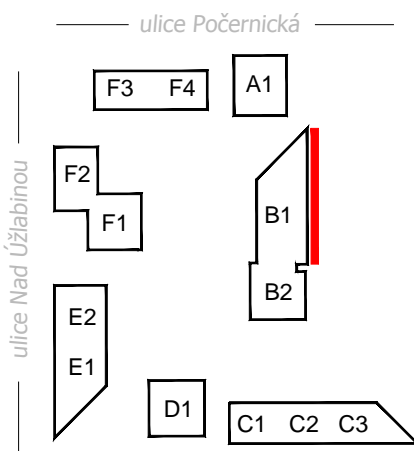
24 pohled severní - objekt A1

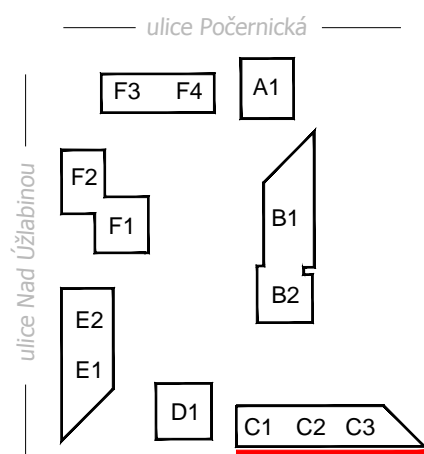
Stavba roku 2016 | A3 | 1:200 | ByTy Malešice

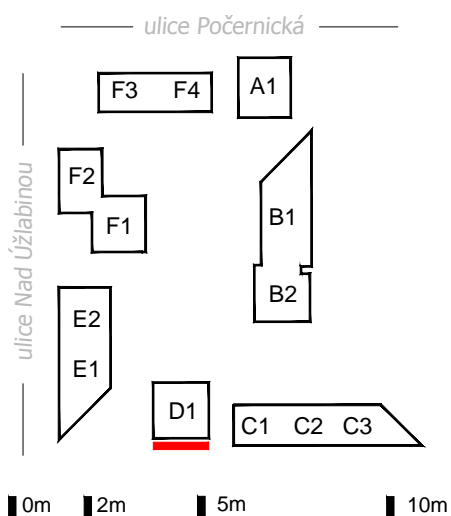


25 pohled jižní - objekt B2

Stavba roku 2016 | A3 | 1:200 | ByTy Malešice

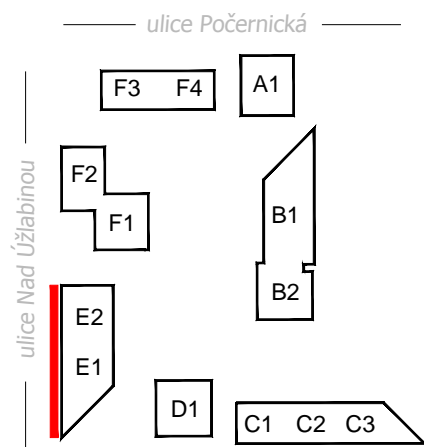


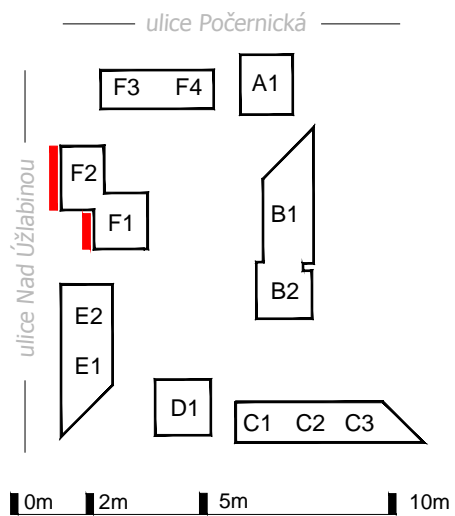




28 pohled jižní - objekt D1

Stavba roku 2016 | A3 | 1:200 | ByTy Malešice





30 pohled západní - objekt F12

Stavba roku 2016 | A3 | 1:200 | ByTy Malešice

